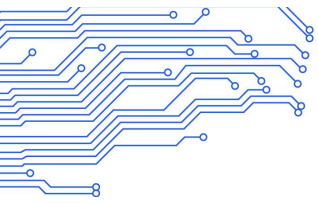
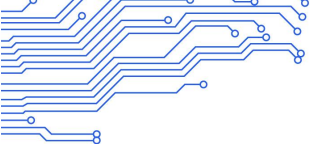


AIoT-3568S V1.2

Specification

Commercial Display Mainboard





APPROVAL SHEET

PRODEUCT: _____

PRODEUCT SPEC: _____

PRODEUCT CODE: _____

SAMPLE DATE: _____

MADE	CHECK	APPROVED BY	PUBLISH SEAL

CUSTOMER: _____

PART CODE: _____

CUSTOMER APPROVER: _____

CHECKED BY	APPROVED BY	APPROVAL SEAL





Document modification history

Version	Revision content	Revision	Audit	Date
V1.0	Initial version		XXX	2022-08-05
V1.1	Revision			2022-11-28
			Huang Peng	2023-04-18

Statement

Copyright statement: All information contained in this user manual, including but not limited to it, is protected by copyright law. Without the permission of Shenzhen Smart Device Technology Co., Ltd. (hereinafter referred to as "ShiMeTa"), there shall be no counterfeiting, copying, excerpting, translating, publishing, etc.

Disclaimer: For the third-party product names or contents mentioned in this user manual, their ownership and intellectual property rights are owned by the owners of each product or content and are protected by existing intellectual property laws and international treaties.



Catalog

Chapter 1 Product Introduction	5
Chapter 2 List of Basic Functions	9
Chapter 3 PCB Dimensions and Interface Layout	10
Chapter 4 Electrical performance	25
Chapter 5 Minimum test item of the whole machine	26
Chapter 6 Configurable parameter table (difference point)	28
Chapter 7 Assembly and Use Precautions	29

Chapter 1 Product Introduction

1.1 Scope of application

Alot-3568S belongs to the motherboard of commercial display self-service terminal, which is generally applicable to smart display terminal products, video terminal products, and industrial automation terminal products, such as: advertising machines, digital signage, smart self-service terminals, smart retail terminals, O2O smart devices, industrial control host, robot equipment, etc.

1.2 Product overview

This product uses Rockchip RK3568 (Cortex-A55x4) quad-core processor, equipped with Android11 system, the main frequency can reach 2.0GHz, the functional interface is rich, the motherboard is small and thin, the board frame is only 126*90MM. Whether it is benchmark or decoding, it is first-class, and it is your new choice in human-computer interaction and industrial control projects.

1.3 Product feature

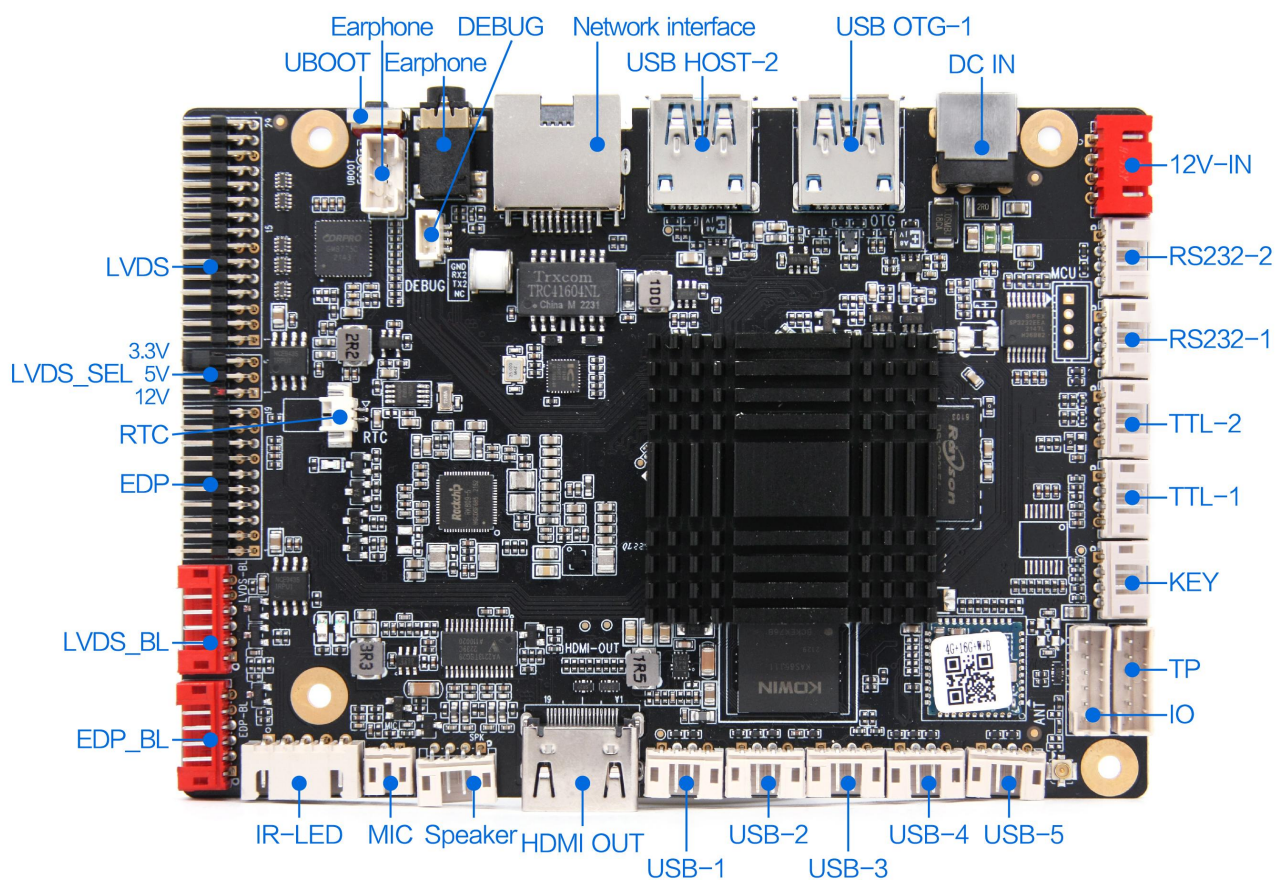
- ◆ High integration. Integrate multiple display interfaces/Ethernet /Wi-Fi/BT in one, simple and ultra-thin, outstanding.
- ◆ Rich expansion interface. 7 USB ports (5 pins, 2 standard USB ports), 4 serial ports (2*TTL, 2*RS232), GPIO/ADC interface, which can meet the requirements of various peripherals on the market.
- ◆ Support dual-screen different display. LVDS screen supports a maximum resolution of 1920*1200, EDP screen can support 1920*1080 resolution, RK official test up to 2650*1600 resolution, MIPI screen maximum support 1920*1080.
- ◆ High performance. Comes with a deep neural network unit (NPU) with performance up to 1 TOPS, capable of meeting the needs of deep learning projects.
- ◆ Support Android system customization, provide system call interface API reference code, and perfectly support customer upper-level application APP development.
- ◆ Rich display interface, in addition to LVDS, eDP and MIPI display interface, but also support HDMI 2.0 display output, bandwidth up to 18Gbps, the highest can support 4K@60Hz, the interface TYPE is HDMI Type-A, to meet the market more than 99% of the application scenarios.

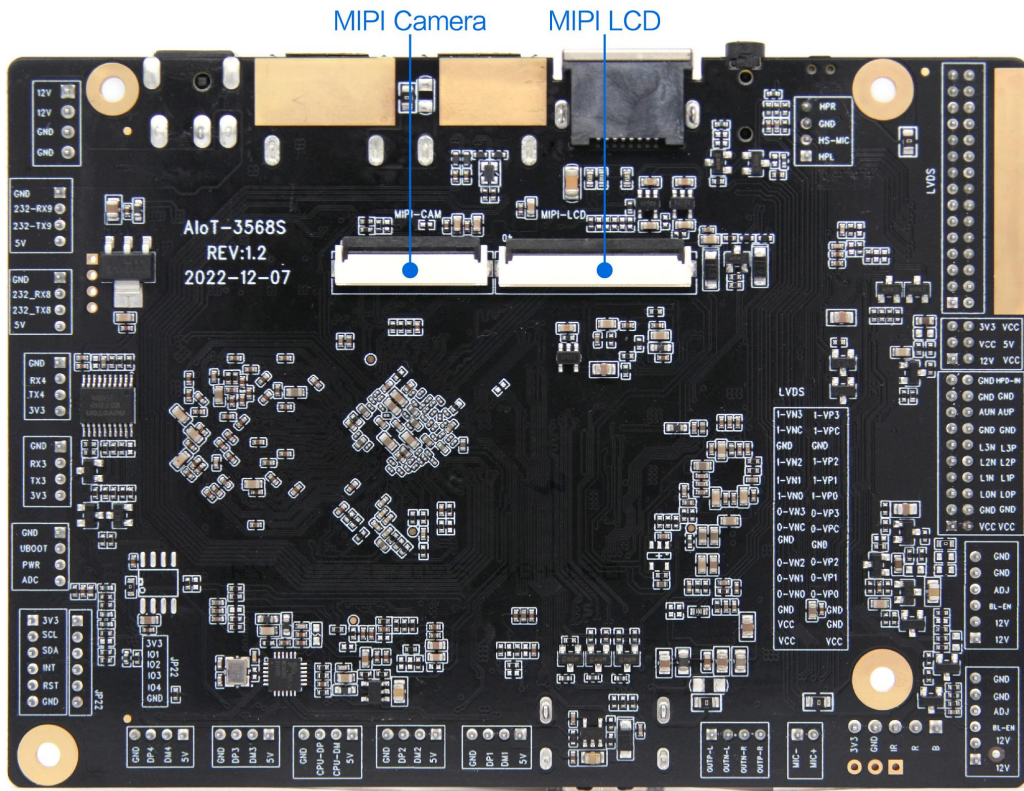


- ◆ Supports a wide range of USB peripherals, such as USB camera, USB flash drive, touch screen, code scanner, card reader, microphone, mouse, 4G module, and so on.
- ◆ Support USB single-binocular camera, and MIPI camera, MIPI interface can support 1x4-lane@2.5Gbps/lane, up to 13M pixels.
- ◆ It perfectly supports various mainstream touch screens such as infrared, optical, capacitive, resistive, touch film, etc., and supports HID configuration of drive-free touch screens without debugging.

1.4 Appearance and interface diagram

Front/Back:





FRONT VIEW

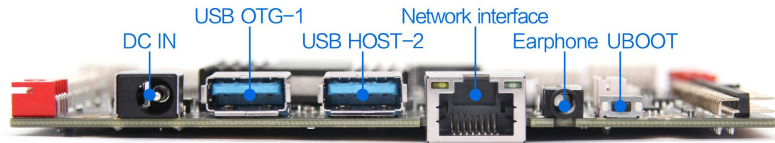


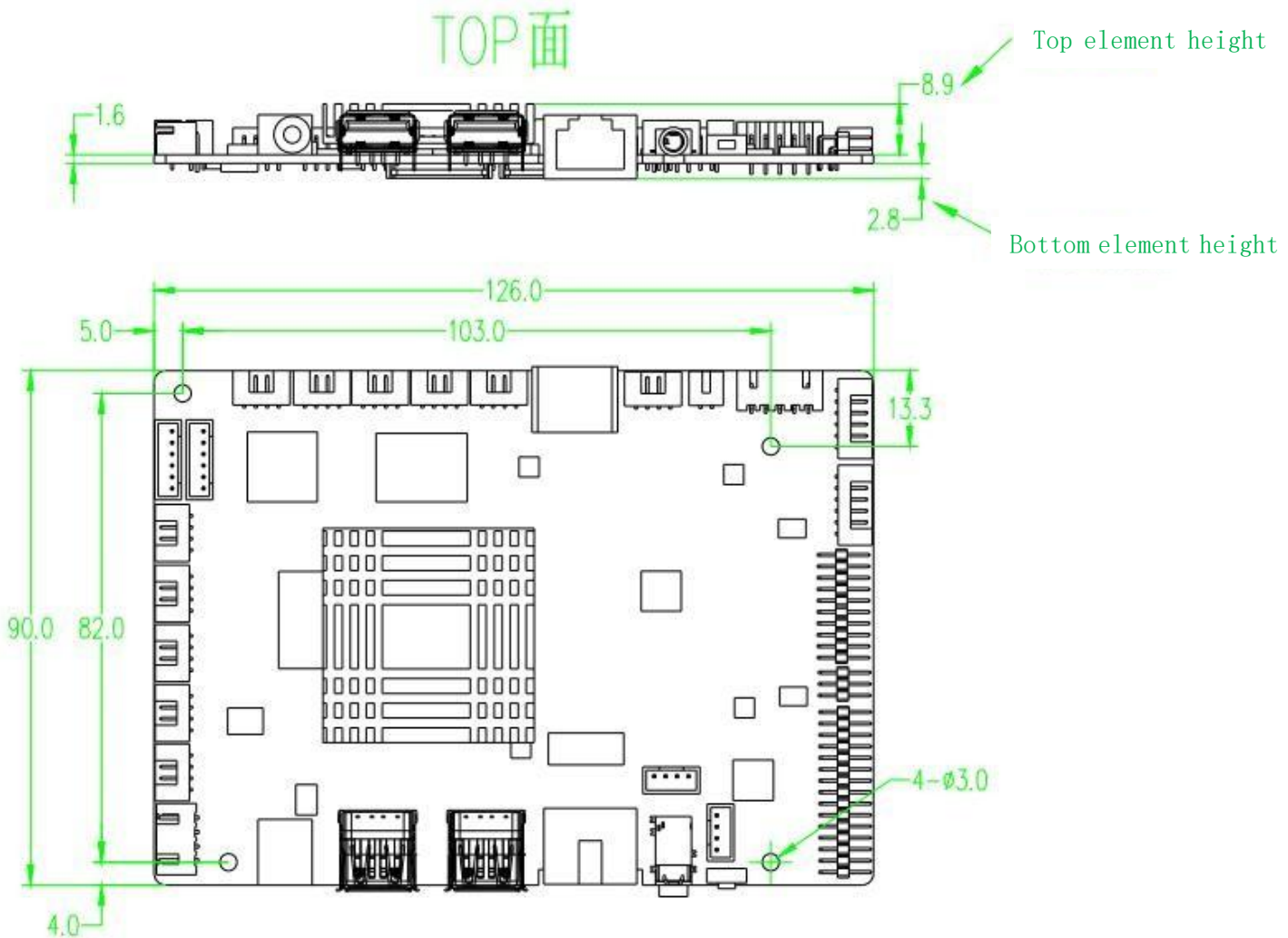
Photo statement: The above photos are taken from a certain batch of boards produced by our company. Due to the continuous maintenance of the product, the actual board cards shipped may not be consistent with the photos.

Chapter 2 List of Basic Functions

Main functional parameters	
Size	126*90mm
CPU	RK3568, quad core, highest frequency: 2.0GHz
Operating system	Android 11.0
RAM/Storage	Standard 2G(4GB optional)/ Standard 16G(32GB/64GB optional)
Built-in ROM	2KB EEPROM (without by default, optional)
HDMI output	1, standard Type-A female socket, up to 4Kx2K@60Hz resolution
LVDS output	1, support single/dual 8 bit, can directly drive 50/60Hz LCD screen, LVDS screen supports a maximum resolution of 1920*1080.
eDP output	1, can directly drive multiple resolution eDP interface LCD screens. In the real test, it can support 1920*1080 resolution, and in the official test of RK, it can reach up to 2650*1600 resolution.
MIPI output	1, can directly drive a variety of resolutions of MIPI interface LCD screen
MIPI camera input	1, can support up to 800W pixels
Audio input/output	Speaker output (Support left and right channel output. The default is 6W. Can be configured with 10W, need to change the resistor) 、 MIC IN*1
Headphone output	Support one-way three/four-segment headphone insertion
USB port	1 USB3.0 OTG、 6 USB HOST
Serial port	2*232(2 channels can be configured as TTL), 2*TTL
I2C port	1, can be connected to I2C interface TP screen or peripherals
Network support	1. Support 10/1000M adaptive Ethernet 2. Built-in WiFi, support Bluetooth 4.2
Storage	Support U disk
RTC real-time clock	Support low power consumption
System upgrade	Support local USB upgrade

Chapter 3 PCB Dimensions and Interface Layout

3.1 PCB size chart



PCB: six-layer board, 1.6mm board thickness

PCBA: L * W=126mm*90mm

Specification of screw hole: ϕ 3.0mm x 4

Note:

1. Heat dissipation design
2. Subject to the actual size of the product

3.2 Interface Parameter Description


Picture Annotation Notes: The “

3.2.1 Power input interface (6pin/2.54mm)

Functional description:

The board is powered by a 12V DC power supply, and it is only allowed to supply power to the board subsystem from the DC socket and power socket. The DC IN specifications of the power adapter plug are D6.0, d2.0. When no external load is connected, the 12V DC power supply needs to support a minimum current of 600mA. The electrical definition of the power input socket is as follows:

Number	Definition	Attributes	Description
1	12V	Input	12V Input
2	12V	Input	12V Input
3	GND	Ground wire	Ground wire
4	GND	Ground wire	Ground wire



Note:

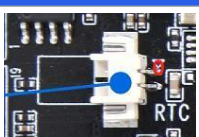
1. The specifications of the power socket must comply with the DC socket model. The default diameter of the DC socket is 6.0, the outer diameter of the copper pin is 2.0, the outer diameter of the DC plug is 5.5mm, and the aperture is 2.1 mm.
2. The voltage fluctuation range of DC socket and 6pin power input port should not exceed 10% of the standard input voltage of 12V, which may affect the stability of the motherboard operation.
3. It is recommended to use a power supply motherboard or adapter that meets the 3C standard, and the rated output power of the selected adapter can meet the motherboard and peripherals running at the same time and leave a margin of 30% -50%. That is, when the total current reaches 1.5A, the specification of 2.5A-3A should be selected.

3.2.2 BAT2 RTC battery interface (2pin/1.25mm)

Functional description:

It adopts 2pin 1.25mm spacing Wafer socket interface, used to supply power to the system clock when the power is off. Electrical definitions are as follows:

Number	Definition	Attributes	Description
1	RTC	input	3V input
2	GND	ground wire	ground wire



Note:

1. When using the RTC battery, check whether the positive and negative electrodes are correct. The reverse connection may cause a short circuit, which poses a risk of fire and explosion.
2. If you find that the RTC time is not accurate during use, please replace the RTC battery in time and choose the correct 3V, CR2036 button battery. If you need to use cable batteries, please contact FAE for the corresponding model specifications.

3.2.3 USB port (4pin/2.0mm*4)

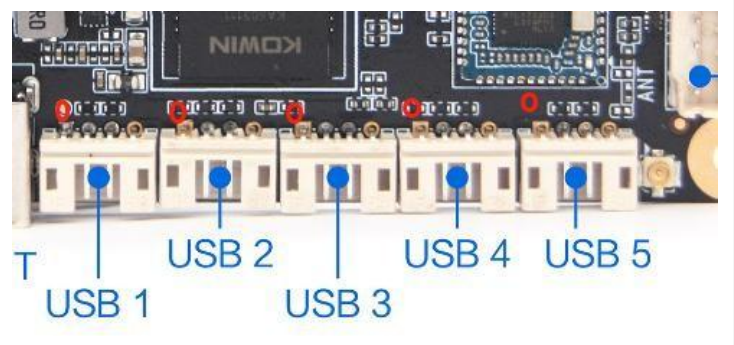
Functional description:

The motherboard has 2 standard USB interfaces and 5 built-in USB sockets for peripheral expansion. The default is

HOST and the power supply current is 500mA. USB3.0 supports 1A by default. The power supply of the USB1 and USB3 is controllable and the current limit is 1A. The other three USBs are not controllable.

Electrical definitions are as follows:

Number	Definition	Attributes	Description
1	VCC	power supply	5V Output
2	DM	input/output	DM
3	DP	input/output	DP
4	GND	Ground wire	Ground wire

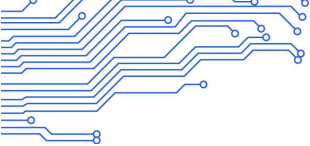


Note:

1. Check the definition of the USB terminal cable before use to prevent the power supply from being reversed from the ground, which may burn peripherals and motherboards.
2. The length of USB peripheral cable should be as short as possible to meet the needs of use. Do not use too long a USB cable, otherwise it may cause stability problems during the use of peripherals.
3. The signal in the USB cable is a high-speed differential signal. USB wire as far as possible to use the wire with braided shielding layer, can greatly enhance the anti-interference force of the device and increase the stability of the device.

USB port description:

Number	Screen print/serial number	Default supply current	Whether the power supply is controllable	Corresponding nodes
1	USB OTG-1	1.4A	Controllable	OTG
2	USB HOST-2	1.4A	Controllable	HOST-1
3	USB-1	1A	Controllable	HUB-1
4	USB-2	unlimited	Uncontrollable	HUB-2
5	USB-3	1A	Controllable	HOST-2
6	USB-4	unlimited	Uncontrollable	HUB-3
7	USB-5	unlimited	Uncontrollable	HUB-4



3.2.4 MIC interface (2pin/2.0mm)

Functional description:

The board has a MIC port for connecting to an external microphone.

Electrical definitions are as follows:

Number	Definition	Attributes	Description
1	MIC-	input	MIC-
2	MIC+	input	MIC+



Note:

1. Pay attention to the positive and negative MIC connections, do not reverse.
2. MIC line length should not be too long, MIC line inside the device as far as possible to avoid high-speed signal line and power line layout, to avoid interference with the sound.

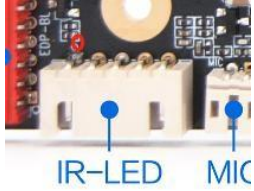
3.2.5 LED/IR port (5pin/2.54mm)

Functional description:

The location is shared with the remote control receiver and indicator (optional welded 2.54mm spacing 5pin socket), and the LED light uses a common negative interface.

Electrical definitions are as follows:

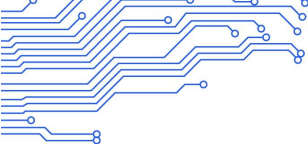
Number	Definition	Attributes	Description
1	LED_B	Output	Work indicator light
2	LED_R	Output	Standby indicator light
3	IR	input	Remote control signal input
4	GND	ground wire	ground wire
5	3.3V	power supply	3.3V Output



Note:

1. The indicator port is a common anode indicator port. By default, a common anode indicator is required.
2. The board default limited current, LED light drive current 6mA, voltage 3.3V, the external indicator does not need to increase resistance, otherwise the brightness may be too low.






3.2.6 Backlight control interface (6pin/2.0mm*2)

Functional description:

By default, the board has two backlight adjustment/control ports. One is the LVDS backlight adjustment/control port by default, and the other is the eDP backlight control/control port by default.

Electrical definitions are as follows:

Number	Definition	Attributes	Description
1	VCC	power supply	12V Output
2	VCC	power supply	12V Output
3	BL-EN	Output	Backlight enable control
4	BL-ADJ	Output	Backlight brightness control
5	GND	Ground wire	Ground wire
6	GND	Ground wire	Ground wire



Note:

1. The 12V power supply in this socket can only be used as backlight power output, prohibited as power input to the system.
2. LVDS dimming mode is ADJ by default, and eDP backlight socket is PWM dimming by default, please choose the dimming mode according to the specification of the selected screen.
3. ADJ and PWM can be switched by changing the hardware, please consult FAE if you need to change.
4. Due to the limited width of the motherboard power supply alignment, only the load of the motherboard itself is taken into consideration during the design, so when using a large screen over 19 inches or the power consumption of the screen is more than 15W, the backlight power supply should be taken from other power supply boards, so as not to cause system instability.

2	VCC	power supply	3.3V Output
3	LED_R	red light	Standby indicator light

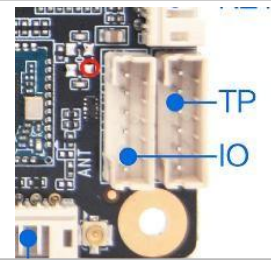
3.2.7 IO/KEY port (8pin/2.0mm)

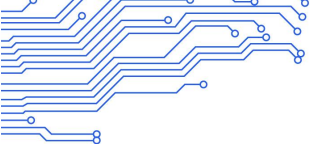
Functional description:

IO is used to provide input/output of control signals to peripherals, and the level is 3.3V. The socket also leads to the interface of the switch button and the upgrade button.

Electrical definitions are as follows:

Number	Definition	Attributes	Description
1	VCC	power supply	3.3V Output
2	I/O	Input	GPIO-1
3	I/O	Input	GPIO-2
4	I/O	Output	GPIO-3
5	I/O	Input	GPIO-4





6	GND	Ground wire	Ground wire	
---	-----	-------------	-------------	--

Note:

1. The peripheral IO level cannot be higher than 3.3V. If the IO level of the docking device is higher than 3.3V, there should be an isolation circuit or level switching circuit, otherwise the main control and device will be burned out.
2. When using an I/O port, note whether the I/O port is an input or output port.
3. The peripheral is powered on through this IO port (When the device is powered off, the IO measured by a multimeter should be 0V).

3.2.8 LVDS screen interface (15*2pin/2.0mm)

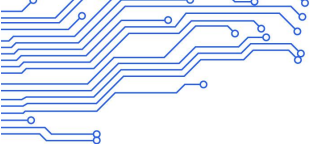
Functional description:

Generic LVDS interface definition, support single/dual, 6/8-bit 1080P LVDS screen.

Electrical definitions are as follows:

Number	Definition	Attributes	Description
1	PVCC	power output	LCD power output, +3.3v/+5V/ +12V optional
2			
3			
4	GND	Ground wire	Ground wire
5			
6			
7	0-VN0	Output	Pixel0 Negative Data (Odd)
8	0-VP0	Output	Pixel0 Positive Data (Odd)
9	0-VN1	Output	Pixel1 Negative Data (Odd)
10	0-VP1	Output	Pixel1 Positive Data (Odd)
11	0-VN2	Output	Pixel2 Negative Data (Odd)
12	0-VP2	Output	Pixel2 Positive Data (Odd)
13	GND	Ground wire	Ground wire
14	GND	Ground wire	Ground wire
15	0-VNC	Output	Negative Sampling Clock (Odd)
16	0-VPC	Output	Positive Sampling Clock (Odd)
17	0-VN3	Output	Pixel3 Negative Data (Odd)
18	0-VP3	Output	Pixel3 Positive Data (Odd)
19	1-VN0	Output	Pixel0 Negative Data (Even)
20	1-VP0	Output	Pixel0 Positive Data (Even)
21	1-VN1	Output	Pixel1 Negative Data (Even)
22	1-VP1	Output	Pixel1 Positive Data (Even)
23	1-VN2	Output	Pixel2 Negative Data (Even)
24	1-VP2	Output	Pixel2 Positive Data (Even)
25	GND	Ground wire	Ground wire





26	GND	Ground wire	Ground wire
27	1-VNC	Output	Negative Sampling Clock (Even)
28	1-VPC	Output	Positive Sampling Clock (Even)
29	1-VN3	Output	Pixel3 Negative Data (Even)
30	1-VP3	Output	Pixel3 Positive Data (Even)

The screen power supply voltage can be adjusted through the LVDS-SEL socket and selected through the jumper cap, optionally supporting 3.3V/5V/ 12V panel power supply. Electrical definitions are as follows:

Number	Definition	Attributes	Description
1	12V	power supply	12V screen power jumps this pin to PANELVCC_IN
2	PANELVCC_IN	power supply	Screen power input pin
3	PANELVCC_IN	power supply	Screen power input pin
4	5V	power supply	5V screen power jumps this pin to PANELVCC_IN
5	3.3V	power supply	3.3V screen power jumps this pin to PANELVCC_IN
6	PANELVCC_IN	power supply	Screen power input pin

In order to avoid burning the board and screen, please pay attention to the following:

1. Please confirm whether the power supply voltage of the screen is correct in the screen specification and whether the corresponding power supply of the board can meet the maximum current of the screen.
2. Please use a multimeter to confirm whether the power supply selected by the jumper cap is correct.
3. When receiving a single screen line of a 6/8-bit LVDS screen, plug it in and install it close to the pin1 end. Do not reverse and dislocation, so as to avoid damage to the screen and motherboard.
4. Before connecting, check whether the electrical definition of the cable sequence matches. Connect the screen before powering on the device. Do not plug or plug the device when it is live.

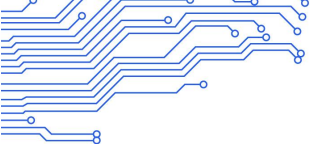
3.2.9 eDP screen interface (10*2pin/2.0mm)

Functional description:

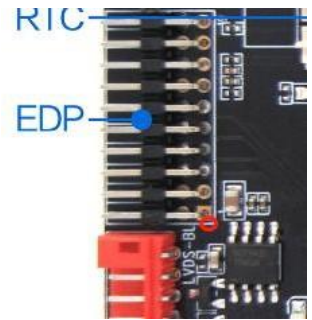
This interface is a common eDP screen interface in the form of 10*2 double-row pins.

Electrical definitions are as follows:

Number	Definition	Attributes	Description
1	PVCC	power supply	eDP screen power output, +3.3v/+5V/ +12V optional
2		supply	

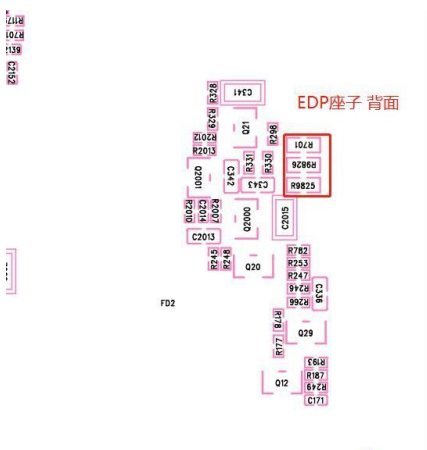


3	GND	Ground wire	Ground wire
4			
5	D0-	Output	Display Port Lane 0 negative output
6	D0+	Output	Display Port Lane 0 positive output
7	D1-	Output	Display Port Lane 1 negative output
8	D1+	Output	Display Port Lane 1 positive output
9	D2-	Output	Display Port Lane 2 negative output
10	D2+	Output	Display Port Lane 2 positive output
11	D3-	Output	Display Port Lane 3 negative output
12	D3+	Output	Display Port Lane 3 positive output
13	GND	Ground wire	Ground wire
14	GND	Ground wire	Ground wire
15	AUX-	Output	Display Port AUX- chanenl negative singal
16	AUX+	Output	Display Port AUX+ chanenl positive singal
17	GND	Ground wire	Ground wire
18	GND	Ground wire	Ground wire
19	GND	Ground wire	Ground wire
20	eDP_HPD	Input	Screen hot plug detection signal, screen output



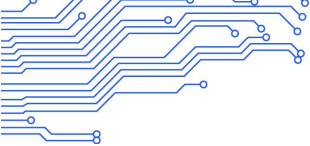
The screen voltage can be selected by jumping resistance. You can choose to support 3.3V/5V/12V screen power supply. The default resistance is 3.3V power supply

R701= 3.3V ; R9825 =5V ; R9826 =12V



Note:

1. Please confirm whether the power supply voltage of the screen is correct in the specifications of the screen, and whether the corresponding power supply of the board can meet the maximum current of the screen.
2. Please use a multimeter to confirm whether the power supply selected by the jumper cap is correct.



3. Before connecting, check whether the electrical definition of the cable sequence matches. Connect the screen before powering on the device. Do not plug or unplug the device when it is live.

3.2.10 RS232 serial socket interface (4pin/2.0mm*2)

Functional description:

The board has 2 sets of common 232 serial ports by default, which can support common 232 serial devices on the market. Default RS232, can be changed to TTL

Electrical definitions are as follows:

Number	Definition	Attributes	Description	
1	GND	Ground wire	Ground wire	
2	PC232-RX	Input	232-RX	
3	PC232-TX	Output	232-TX	
4	VCC	Power supply	5V Output	

Precautions:

1. Whether the serial port voltage matches. Can not directly connect to TTL, RS485 serial devices.
2. Whether the connection of TX and RX is correct.

3.2.11 TTL serial socket interface*2 (4pin/2.0mm*2)

Functional description:

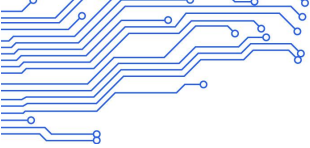
The board supports 2 sets of common dual-wire serial ports, which can support common serial port devices in the market, and the level of serial ports is 0V to 3.3V. Electrical definitions are as follows:

Number	Definition	Attributes	Description	
1	GND	Ground wire	Ground wire	
2	UART-RX	Input	RX	
3	UART-TX	Output	TX	
4	VCC	Power supply	3.3V Output	

Precautions:

1. Whether the TTL serial port voltage matches. Can not directly connect to RS232, RS485 equipment.
2. Whether the connection of TX and RX is correct.
3. If the level of the connected serial port is higher than 3.3V, there must be an isolation circuit or a level conversion circuit, otherwise the main control and equipment will be burned out.
4. Note the mapping between system nodes and hardware serial ports during software development. For details, see Definition of Serial Ports and System Nodes in the following section.





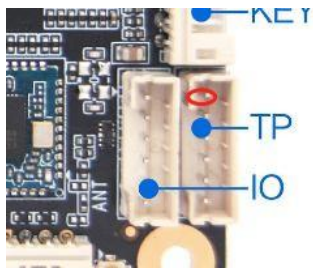
3.2.12 I2C interface (6pin/2.0mm)

Functional description:

The board supports the TP screen connected to the I2C interface.

Electrical definitions are as follows:

Number	Definition	Attributes	Description
1	VCC	Power supply	3.3V Output
2	SCL	Input/Output	I2C Clock
3	SDA	Input/Output	I2C Data
4	INT	Input/Output	Interrupt
5	RST	Input/Output	Reset
6	GND	Ground wire	Ground wire



Notes:

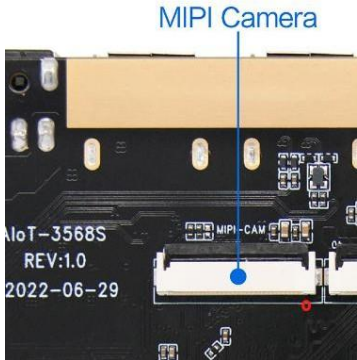
1. The board supports the TP screen connected to the I2C interface. Before connecting the board, check whether the interface of the touch screen is I2C or USB.
2. The level of I2C, RST, and INT in the interface is 3.3V. If a 1.8V touch screen is connected, the level must be converted.
3. Please note that the electrical definition of the wire sequence matches before connecting. Connect the touch screen before powering it on. Do not plug it in when it is live.

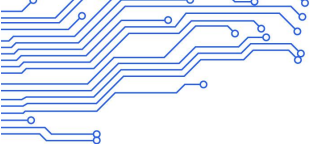
3.2.13 MIPI Camera port (30pin/0.5mm*2)

Functional description:

The board supports 1 mipi camera input, and the electrical definition is as follows:

Number	Definition	Attributes	Description
1	NC	/	/
2	VDD	power supply	2.8V Output
3	DVDD	power supply	1.2V Output
4	DOVDD	power supply	1.8V Output
5	NC	/	/
6	GND	Ground wire	Ground wire
7	VDD	power supply	2.8V Output
8	GND	Ground wire	Ground wire
9	SDA	Input/Output	SDA signal
10	SCL	Output	SCL signal
11	RST	Output	reset signal
12	PWDN	Output	power down control
13	GND	Ground wire	Ground wire
14	MCLK	Output	master clock



15	GND	Ground wire	Ground wire
16	D3P	Input/Output	mipi data channel 3 positive
17	D3N	Input/Output	mipi data channel 3 negative
18	GND	Ground wire	Ground wire
19	D2P	Input/Output	mipi data channel 2 positive
20	D2N	Input/Output	mipi data channel 2 negative
21	GND	Ground wire	Ground wire
22	D1P	Input/Output	mipi data channel 1 positive
23	D1N	Input/Output	mipi data channel 1 negative
24	GND	Ground wire	Ground wire
25	CLKP	Input/Output	Mipi clock channel positive
26	CLKN	Input/Output	Mipi clock channel negative
27	GND	Ground wire	Ground wire
28	D0P	Input/Output	mipi data channel 0 positive
29	D0N	Input/Output	mipi data channel 0 negative
30	GND	Ground wire	Ground wire

Note:

1. The maximum supported resolution is 4096X2304.
2. Cannot support binocular mipi camera module.
3. The signal level of I2C and RST in the interface is 1.8V. If the module with 3.3V level is connected, the level needs to be converted.
4. Before connecting, ensure that the electrical definition of the cable sequence matches. Connect the module first and then power it on. Do not plug it in when it is live.

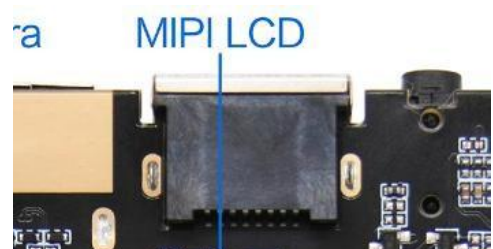
3.2.14 MIPI screen interface (back, 40pin/0.5mm)

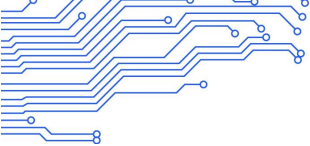
Function description:

The mainboard supports one mipi screen display port in the form of a 32pin 0.5mm FPC socket.

Electrical definition:

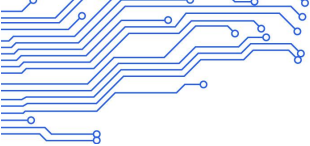
Number	Definition	Attributes	Description
1	VDD_1V8	power supply	1.8V input
2	VDD_3V3	power supply	3.3V input
3	VDD_3V3	power supply	
4	NC	NC	NC
5	Reset	output	Screen reset signal, high level 3.3V
6	NC	NC	NC





7	GND	Ground wire	Ground wire
8	MIPI_D0N	output	MIPI Port Lane 0 negative output
9	MIPI_D0P	output	MIPI Port Lane 0 positive output
10	GND	Ground wire	Ground wire
11	MIPI_D1N	output	MIPI Port Lane 1 negative output
12	MIPI_D1P	output	MIPI Port Lane 1 positive output
13	GND	Ground wire	Ground wire
14	MIPI_CKN	output	MIPI Port clock negative output
15	MIPI_CKP	output	MIPI Port clock positive output
16	GND	Ground wire	Ground wire
17	MIPI_D2N	output	MIPI Port Lane 2 negative output
18	MIPI_D2P	output	MIPI Port Lane 2 positive output
19	GND	Ground wire	Ground wire
20	MIPI_D3N	output	MIPI Port Lane 3 negative output
21	MIPI_D3P	output	MIPI Port Lane 3 positive output
22	GND	Ground wire	Ground wire
23	NC	NC	NC
24	NC	NC	NC
25	GND	Ground wire	Ground wire
26	NC	NC	NC
27	NC	NC	NC
28	NC	NC	NC
29	NC	NC	NC
30	GND	Ground wire	Ground wire
31	LED-	power supply	LCD backlight power -
32	LED-	power supply	
33	NC	NC	NC
34	NC	NC	NC
35	NC	NC	NC
36	NC	NC	NC
37	NC	NC	NC
38	NC	NC	NC





39	LED+	power supply	LCD backlight power+
40	LED+	power supply	

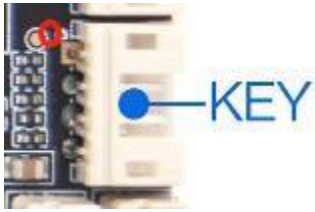
1. Please confirm whether the parameters such as power supply voltage and current of the screen specification book match with the board. The default backlight driving current of the board is 70mA. If it does not meet the current parameter requirements of the selected screen, you can seek support from our FAE, or adjust the output current of the Iled by adjusting the resistance value, formula: $I(\text{led})=200\text{mV}/R$.
2. Confirm that the screen interface and the board interface line sequence electrical definition is consistent, FPC screen line selection is correct.
3. The signal level of I2C and RST in the interface is 1.8V. If the module with 3.3V level is connected, the level needs to be converted.
4. Before connecting, please note whether the electrical definition of the wire sequence matches. The module must be connected first and then powered on.

3.2.15 KEY interface (4pin/2.0mm)

Function description:

IO is used to provide the input/output of the control signal to the peripheral, and the level is 1.8V. The socket also leads to the switch button and the upgrade button interface. Electrical definition:

Number	Definition	Attributes	Description
1	GND	Ground wire	Ground wire
2	UBOOT	input	program key
3	POWER-ON	input	On/off button
4	ADC	input	ADC



Notes:

1. Peripheral IO level can not be higher than 1.8V, if the IO level of the docking device is higher than 1.8V, there should be isolation circuit or level conversion circuit, otherwise it will burn out the main control and equipment.
2. When using IO port, pay attention to whether IO port is input or output.
3. Pay attention to the peripheral through this IO port series power (shutdown state, using the multimeter to measure this IO should be 0V)

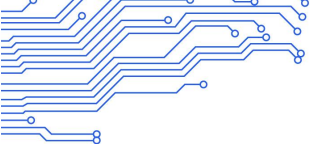
3.2.16 Headphone jack (4pin/2.0mm)

Function description:

Support left and right dual channels, support MIC recording

Electrical definition:

Number	Definition	Attributes	Description
1	HP-L	output	Left channel output



2	MIC	input	Recording input	
3	GND	Ground wire	Ground wire	
4	HP-R	output	Right channel output	


Note:

1. This is the headphone interface, not the speaker interface, do not use the speaker
2. Before use, please make sure that the line sequence electrical definition is consistent

3.2.17 Speaker port (4pin/2.0mm)

Functional description: This port can be connected to an external speaker.

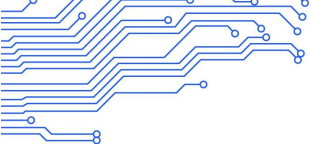
Electrical definition:

Number	Definition	Attributes	Description	
4	OUTP-L	output	Audio output left +	
3	OUTN-L	output	Audio output left -	
2	OUTN-R	output	Audio output right -	
1	OUTP-R	output	Audio output right +	

Note:

1. This is a dual horn connection. When using a single horn is pin1 and pin2 group, pin3 and pin4 group, make no mistake.
2. The use of the horn, you need to connect the horn before starting. Do not allow live plug.
3. The default output power of the horn interface is 8R/6W. If a 4R horn is used, the power should be reduced by half accordingly.
4. The maximum power amplifier chip can support power up to 8R/ 10W, requiring custom hardware implementation.
5. When using, be sure to measure the actual maximum output power should be less than the actual horn rated power.

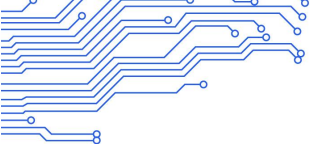




3.2.18 Other standard interfaces and features

Interface	Standard	Parameter Description
Memory interface	TF card	Using the SD3.0 interface specification, the maximum support is Class10, the minimum write/read speed is 10MB/s, and the maximum capacity is 128GB
	USB TYPE-A	USB 2.0, up to 480Mbps/s transfer rate (60MB/s) USB 3.0, up to 5.0Gbps/s transfer rate (500MB/s)
Ethernet interface	RJ45 interface	Support 10/100M wired network
HDMI port	HDMI TYPE-A	HDMI 1.4, 2.0 Supports multiple resolutions, 1920x1080, 1280x720, 720x576, 720x480 etc
Headphone jack	3.5mm	Support left and right dual channels, support MIC recording





Chapter 4 Electrical performance

Items		Min	Typical	Max
Power parameter	Voltage	--	12V	--
	Ripple	--	--	50mV
	Current	3A		
Supply current(HDMI output, no other peripherals are connected)	working current		250mA	380mA
	standby current		22mA	30mA
Supply current(LVDS)	3.3V working current		400 mA	1.5A
	5V working current		550 mA	2A
	12V working current		580 mA	2A
Supply current (eDP)	3.3V working current		400 mA	1.5A
	5V working current		550 mA	2A
	12V working current		580 mA	2A
Total output	current	--	--	3A
Environment	Relative humidity	--	--	80%
	Operating temperature	-10℃	--	60℃
	Storage temperature	-40℃		80℃

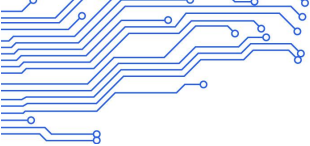
Remark 1: When connecting the LVDS/eDP screen, please pay attention to selecting the correct screen working voltage 3.3V, 5V, 12V to avoid burning the screen.

Remark 2: When connecting to LVDS/eDP screen, the overall working current and standby current of the board depend on the connected screen, which are not listed in the above table.

Chapter 5 Minimum test item of the whole machine

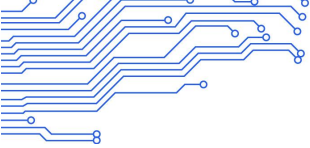
Description:

Minimum test item of stability and reliability of the whole machine		
Number	Test item	Test detail and description
1	Basic functional performance test	Test the main function performance of the whole machine, test wifi, Bluetooth, Ethernet, USB, serial port, video playback and other functions
2	Software upgrade function test	The whole product upgrade function verification, respectively test product line brush, U disk upgrade, and network remote upgrade function is normal
3	High temperature aging test	Test the high temperature resistance of the whole machine. After playing the aging work video in 60°C environment for 3 days, it can run normally and there are no bad electrical phenomena such as crash, abnormal painting and black screen
4	Low temperature power failure test	Test the anti-low temperature ability of the whole machine. After playing the aging work video in 0°C environment for 3 days, it can run normally and there are no bad electrical phenomena such as crash, abnormal painting and black screen
5	Low temperature power failure test	Test the product in the ability to withstand power on and off, programming 3 minutes to shut down, 7 minutes to start, after 7 days of normal operation, no crash, abnormal, black screen and other electrical adverse phenomena, abnormal record probability is not more than 4/10000
6	Electrostatic (ESD) test	The simulation test evaluates the anti-static discharge capability of the product. According to the IEC 61000-4-2 test standard, the product is discharged by contact $\pm 4\text{KV}$ and air $\pm 8\text{KV}$. Product validation must meet A Grade A or B to be accepted, and C and D grades are nonconformity
7	Sweep vibration test	Test the vibration resistance of the product through simulated transport tests and the bearing capacity of the board solder and parts to avoid potential problem points. The vibration tester was used to test the product. After the test, the structure of the test product was not loose and fell off, and it could operate normally. There was no crash, abnormal painting, black screen and other electrical defects and structural appearance damage, and it was judged to be OK
8	Free drop test	Test the vibration resistance of the product through simulated transport tests and the bearing capacity of the board solder and parts to avoid potential problem points. Use a vibration tester to test the product. After the test, the structure of the test product is not loose and falling off, and it can operate normally, and there is no crash, abnormal painting, black screen and other



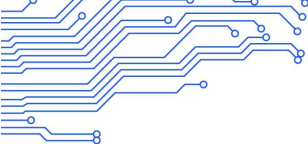
		electrical defects and structural appearance damage, then it is judged to be OK.
9	Short power failure shock at normal temperature	Through this test, the ability of the product to withstand the power supply is tested
10	Long time timing switch machine at normal temperature	To verify the stability of MCU and the stability of system operation, the timing switch tool is set to start the machine at 9:30 am and shut down at 18:30 minutes, and the log records the same time interval for each startup. Turn on and off on time. If the error is less than 1min, it is judged to be qualified
11	Voltage overvoltage and undervoltage test	According to the power supply specification of the Android board, the voltage bearing capacity of the board is tested through the voltage change, and the whole machine is tested for 2 hours under the rated power supply of -20% +30%. After the test is carried out and completed, the test product can run normally, and no bad electrical phenomena such as crash, abnormal painting and black screen are judged to be OK





Chapter 6 Configurable parameter table (difference point)

Type	Standard		Medium configuration		High configuration	
DDR	2G	<input checked="" type="checkbox"/>	2G	<input type="checkbox"/>	2G	<input type="checkbox"/>
	4G	<input type="checkbox"/>	4G	<input checked="" type="checkbox"/>	4G	<input type="checkbox"/>
	8G	<input type="checkbox"/>	8G	<input type="checkbox"/>	8G	<input checked="" type="checkbox"/>
EMMC	16	<input checked="" type="checkbox"/>	16	<input type="checkbox"/>	16	<input type="checkbox"/>
	32	<input type="checkbox"/>	32	<input checked="" type="checkbox"/>	32	<input type="checkbox"/>
	64	<input type="checkbox"/>	64	<input type="checkbox"/>	64	<input checked="" type="checkbox"/>
Wi-Fi+BT	2.4G+BT	<input checked="" type="checkbox"/>	2.4G+BT	<input checked="" type="checkbox"/>	2.4G+BT	<input type="checkbox"/>
	5G+BT	<input type="checkbox"/>	5G+BT	<input type="checkbox"/>	5G+BT	<input checked="" type="checkbox"/>
4G/PCIE	<input type="checkbox"/>		<input type="checkbox"/>		<input type="checkbox"/>	
5G/M.2	<input type="checkbox"/>		<input type="checkbox"/>		<input type="checkbox"/>	
ETH/RJ45	<input checked="" type="checkbox"/>		<input checked="" type="checkbox"/>		<input checked="" type="checkbox"/>	
SATA3.0	<input type="checkbox"/>		<input type="checkbox"/>		<input type="checkbox"/>	
LVDS	<input checked="" type="checkbox"/>		<input checked="" type="checkbox"/>		<input checked="" type="checkbox"/>	
eDP	<input checked="" type="checkbox"/>		<input checked="" type="checkbox"/>		<input checked="" type="checkbox"/>	
HDMI	<input checked="" type="checkbox"/>		<input checked="" type="checkbox"/>		<input checked="" type="checkbox"/>	
MIPI	<input checked="" type="checkbox"/>		<input checked="" type="checkbox"/>		<input checked="" type="checkbox"/>	
USB*7	<input checked="" type="checkbox"/>		<input checked="" type="checkbox"/>		<input checked="" type="checkbox"/>	
TTL*2	<input checked="" type="checkbox"/>		<input checked="" type="checkbox"/>		<input checked="" type="checkbox"/>	
RS232*2	<input checked="" type="checkbox"/>		<input checked="" type="checkbox"/>		<input checked="" type="checkbox"/>	
RS485*1	<input type="checkbox"/>		<input type="checkbox"/>		<input type="checkbox"/>	
CAN*1	<input type="checkbox"/>		<input type="checkbox"/>		<input type="checkbox"/>	
Hdmi in	<input type="checkbox"/>		<input type="checkbox"/>		<input type="checkbox"/>	
TF	<input checked="" type="checkbox"/>		<input checked="" type="checkbox"/>		<input checked="" type="checkbox"/>	



Chapter 7 Assembly and Use Precautions

In the process of assembly and use, please pay attention to the following (and not limited to) problems.

1. Please ensure that the board card is not electrified for installation and installation of peripherals, and be sure to wear electrostatic bracelet and other anti-static tools during installation.
2. When connecting peripherals through wires, please ensure that the pin definition of each peripheral is corresponding to the socket of the main board to avoid short circuit caused by wire sequence error.
3. When fixing the main board with screws, pay attention to make the board card bear the force evenly, so as to avoid the PCB opening due to the deformation of the board car.
4. When installing interfaces with optional screen voltages (such as LVDS, eDP, etc.), please note that the voltage selected is consistent with the screen specifications.
5. When installing peripherals (USB, UART, IO .etc), pay attention to the level matching and current output capability of peripherals.
6. The 12V power supply in the backlight socket can only be used as backlight power output, and is strictly prohibited to be used as power input to the motherboard.The input power should be selected according to the general peripherals to evaluate whether the input power voltage and total current can meet the requirements.
7. The input power should be selected according to the general peripherals to evaluate whether the input power voltage and total current can meet the requirements.
8. When designing the whole product, the height limit and heat dissipation of the board should be considered.